

**SAPIENS**



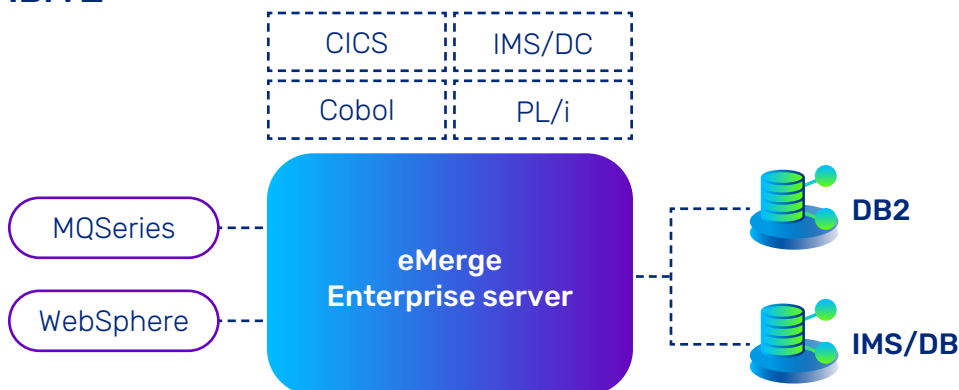
# Leveraging IBM Z investment by eMerge

# Introduction

Dozens of eMerge-based solutions are currently operated on IBM mainframe platforms. As eMerge has evolved through the years, most of the solution's investment was exposed to external technologies adjusted by eMerge versions+.

- 1 IBM Z runtime platform**  
Together with eMerge IBM Z customers, Sapiens continues to enhance IBM Z platform capabilities focused in two directions:
- 2 IBM Z enhancements**  
Direct investment in the IBM Z operating system, as well as in the wide set of eMerge associated products of IBM: DB2, CICS, IMS, MQSeries, Cobol, PL/I, and WebSphere. These investments in IBM Z and the products are to enable new functionalities that IBM provides.

## IBM Z



## In addition,

Sapiens is responsible for eMerge compatibility with all IBM product versions. Thus, if needed, eMerge is adjusted to support potential eMerge modifications.

## IBM Z integration with other technologies

IBM Z customers need to easily integrate IBM Z solutions with external various technologies. Modifications to the environmental information technology occur very rapidly and requires continued attention to IBM Z integration abilities. Most integrations require the exposure of IBM Z eMerge applications either as a web-server or as a web-client. Due to IT trends, eMerge integration abilities are always under continuous development. Integration abilities between eMerge IBM Z applications and any non-IBM Z applications, can be implemented by the following optional alternatives:

### A. Messaging and Queuing -

This integration can be implemented in both inbound and outbound directions, synchronously and asynchronously. The queuing may be implemented via these state-of-the-art technologies:

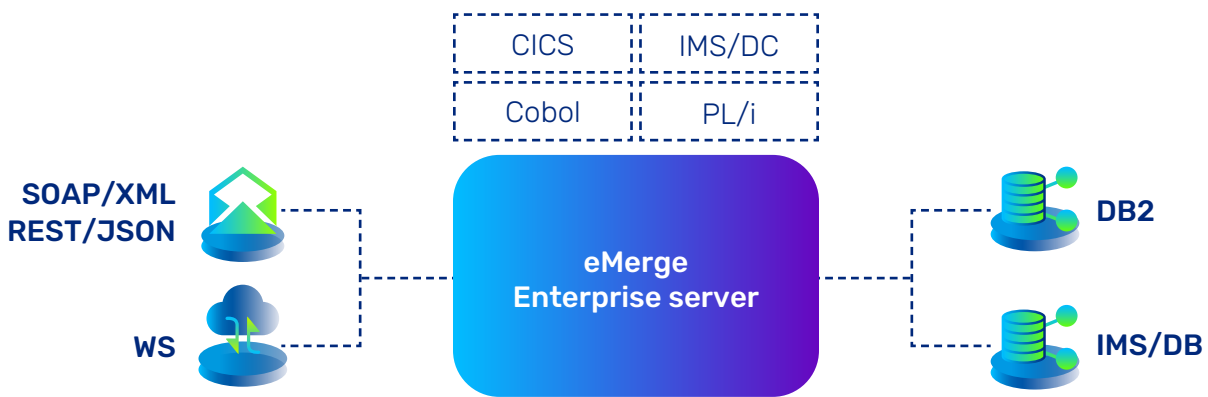
- Either by SOAP or REST protocols
- Either by XML or JSON technologies

### B. Web-services exposing

Approach any eMerge application object access via standard web-services by JAVA or C# running from the IBM Z platform.



## The eMerge application may also be utilized by foreign 3<sup>rd</sup> party web-services



## User-Experience Access

The User-Experience (UX) trend continues to provide more and more technologies that enable eMerge end-users to modernize their user experiences for existing eMerge IBM Z applications.

Original 3270 legacy interfaces were smoothly upgraded to client-server screens and then to 3-tiers UX screens.

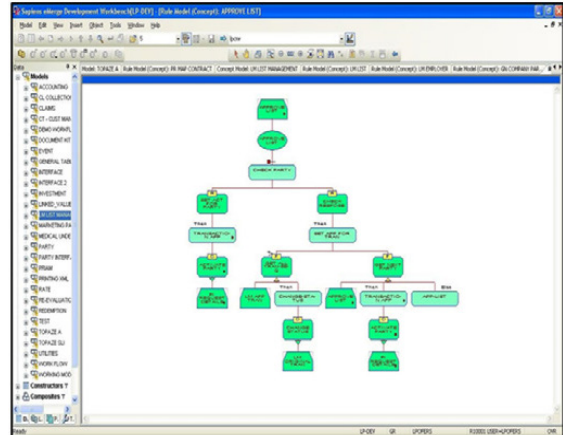
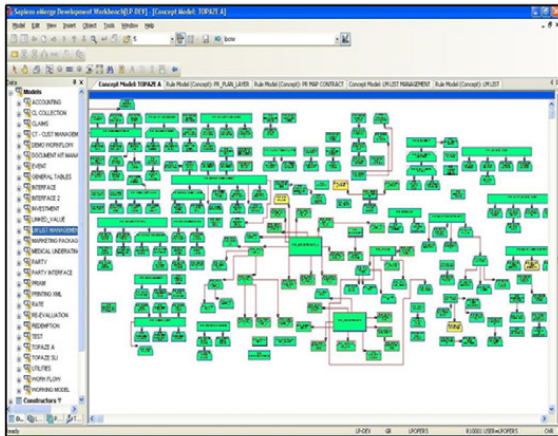
Participant			Game of Choice	Performance >	Monthly Breakdown			
Name	Language	Country	Game Name	Bought	Bank Balance	Oct	Nov	Dec
<input type="checkbox"/> Tony Smith	English	Ireland	Search...	✓	\$2,397	\$18,825	\$9,154	\$96,416
<input type="checkbox"/> Andrew Connell	Swedish	Sweden	<input checked="" type="checkbox"/> (Select All)	✓	\$12,749	\$23,786	\$23,476	\$83,386
<input type="checkbox"/> Kevin Flanagan	Spanish	Uruguay	<input checked="" type="checkbox"/> Argentina	✗	\$95,078	\$80,006	\$68,659	\$26,858
<input type="checkbox"/> Bricker McGee	French	France	<input checked="" type="checkbox"/> Belgium	✗	\$65,506	\$40,140	\$48,995	\$87,822
<input type="checkbox"/> Dimple Unalkat	Portuguese	Portugal	<input checked="" type="checkbox"/> Brazil	✓	\$85,310	\$56,319	\$22,113	\$74,268
<input type="checkbox"/> Gill Lopes	Spanish	Colombia	<input checked="" type="checkbox"/> Colombia	✓	\$75,701	\$21,624	\$71,240	\$80,031
<input type="checkbox"/> Sophie Beckham	English	Ireland	<input checked="" type="checkbox"/> France	✗	\$66,706	\$98,398	\$79,217	\$81,059
<input type="checkbox"/> Isabelle Black	French	France	<input checked="" type="checkbox"/> Germany	✗	\$15,749	\$51,402	\$11,671	\$9,112
<input type="checkbox"/> Emily Braxton	Maltese	Malta	Reset Filter	✓	\$4,057	\$45,453	\$3,530	\$20,278
<input type="checkbox"/> Olivia Brennan	French	France		✓	\$32,835	\$55,829	\$12,158	\$18,188
<input type="checkbox"/> Lily Brock	Italian	Italy	YINSH	✗	\$7,440	\$61,739	\$57,397	\$45,889
<input type="checkbox"/> Chloe Bryson	Greek	Greece	Downfall	✗	\$65,717	\$71,521	\$26,543	\$34,513
<input type="checkbox"/> Isabella Cadwell	English	Ireland	Gipf	✓	\$53,145	\$60,261	\$48,111	\$93,726
<input type="checkbox"/> Amelia Cape	English	Ireland	Shogi	✓	\$28,394	\$27,146	\$32,634	\$29,910
<input type="checkbox"/> Jessica Carson	Swedish	Sweden	Mad Gab	✗	\$76,329	\$53,475	\$90,049	\$60,890

# Development Workbench

The eMerge Development Workbench is a collection of procedures and tools for developing, testing and debugging the IBM Z applications.

The eMerge Development Workbench is the eMerge development tool.

The eMerge Development Workbench provides a single integrated development environment to develop applications; from the analysis stage to the testing and maintenance of live applications. Applications are developed using an iterative development approach. This contrasts with customary serial “waterfall” approaches to application development.



## IBM Z – eMerge development environment

Sapiens is using both IBM Z and VM operating systems as the base development and maintenance platform for all eMerge available platforms. eMerge program code is developed and maintained on a mainframe as a single common source for IBM Z and non-IBM Z platforms. Only after eMerge code testing on IBM Z is eMerge code distributed to other operating systems – IBM I Serious, Linux and Windows.

### About Sapiens

Sapiens International Corporation (NASDAQ and TASE: SPNS) is a global leader in intelligent insurance software solutions. With Sapiens’ robust platform, customer-driven partnerships, and rich ecosystem, insurers are empowered to future-proof their organizations with operational excellence in a rapidly changing marketplace. We help insurers harness the power of AI and advanced automation to support core solutions for property and casualty, workers’ compensation, and life insurance, including reinsurance, financial & compliance, data & analytics, digital, and decision management. Sapiens boasts a longtime global presence, serving over 600 customers in more than 30 countries with its innovative offerings. Recognized by industry experts and selected for the Microsoft Top 100 Partner program, Sapiens is committed to partnering with our customers for their entire transformation journey and is continuously innovating to ensure their success. For more information visit [sapiens.com](https://sapiens.com) or follow us on [LinkedIn](https://www.linkedin.com/company/sapiens)

Contact Us